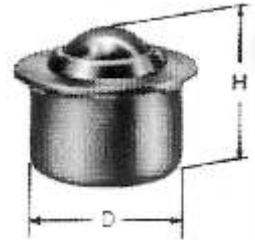




Kugellrollen Gepresste Stahlteile

| KU30 | Bestellzeichen | Abmessungen | | Preis Euro |
|------------------------|----------------|-------------|------|------------|
| | | D | H | |
| verzinkt | KU30-115 | 24,0 | 21,0 | 4,85 |
| | KU30-122 | 36,0 | 29,5 | 7,40 |
| | KU30-130 | 45,0 | 37,8 | 14,55 |
| verzinkt + Niro-Kugeln | KU30-215 | 24,0 | 21,0 | 8,45 |
| | KU30-222 | 36,0 | 29,5 | 14,00 |
| | KU30-230 | 45,0 | 37,8 | 19,15 |
| niro | KU30-515 | 24,0 | 21,0 | 10,35 |
| | KU30-522 | 36,0 | 29,5 | 17,90 |
| | KU30-530 | 45,0 | 37,8 | 40,90 |

| KU31 | Bestellzeichen | Abmessungen | | Preis Euro |
|----------------------|----------------|-------------|------|------------|
| | | D | H | |
| verzinkt + POM-Kugel | KU31-115 | 24,0 | 21,0 | 6,75 |
| | KU31-122 | 36,0 | 29,5 | 9,70 |
| | KU31-130 | 45,0 | 37,8 | 37,30 |



Saturnrollen Gepresste Stahlteile

| KU34 | Bestellzeichen | Abmessungen | | Preis Euro |
|----------|----------------|-------------|------|------------|
| | | D | H | |
| verzinkt | KU34-116 | 24,0 | 19,3 | 5,90 |
| | KU34-122 | 33,0 | 27,7 | 7,50 |
| | KU34-124 | 38,0 | 30,0 | 7,70 |
| | KU34-132 | 46,0 | 36,5 | 25,55 |
| niro | KU34-516 | 23,0 | 19,3 | 15,75 |
| | KU34-524 | 36,0 | 30,0 | 24,55 |
| | KU34-532 | 46,0 | 36,5 | 35,80 |

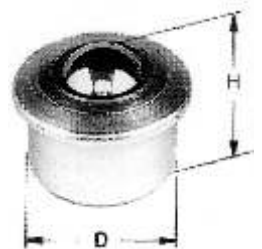
| KU35 | Bestellzeichen | Abmessungen | | Preis Euro |
|----------------------|----------------|-------------|------|------------|
| | | D | H | |
| verzinkt + POM-Kugel | KU35-116 | 24,0 | 19,3 | 7,60 |
| | KU35-122 | 33,0 | 27,7 | 10,40 |
| | KU35-124 | 38,0 | 30,0 | 11,00 |
| | KU35-132 | 46,0 | 36,5 | 61,80 |



Topfrollen

| TR.. | Bestellzeichen | Abmessungen | | Preis Euro |
|--------------------------|----------------|-------------|------|------------|
| | | D | H | |
| metallblank | TR00-012 | 22,0 | 17,0 | 4,90 |
| | TR20-015 | 24,0 | 20,0 | 6,55 |
| | TR00-022 | 36,0 | 30,5 | 8,10 |
| | TR00-030 | 45,0 | 36,8 | 15,10 |
| | TR00-045 | 62,0 | 53,5 | 43,65 |
| | TR00-060 | 100,0 | 78,0 | 183,05 |
| | verzinkt | TR00-112 | 22,0 | 17,0 |
| TR20-115 | | 24,0 | 20,0 | 6,30 |
| TR00-122 | | 36,0 | 30,5 | 8,60 |
| TR00-130 | | 45,0 | 36,8 | 16,15 |
| TR00-145 | | 62,0 | 53,5 | 45,60 |
| TR00-160 | | 100,0 | 78,0 | 194,30 |
| verzinkt + POM-Laufkugel | | TR01-112 | 22,0 | 17,0 |
| | TR21-115 | 24,0 | 20,0 | 6,90 |
| | TR01-122 | 36,0 | 30,5 | 12,05 |
| | TR01-130 | 45,0 | 36,8 | 26,50 |

| TR.0 | Bestellzeichen | Abmessungen | | Preis Euro |
|------------------------|----------------|-------------|------|------------|
| | | D | H | |
| verzinkt + Niro-Kugeln | TR00-212 | 22,0 | 17,0 | 6,55 |
| | TR00-215 | 24,0 | 20,0 | 7,40 |
| | TR20-215 | 24,0 | 20,0 | 8,60 |
| | TR00-222 | 36,0 | 30,5 | 15,05 |
| | TR00-230 | 45,0 | 36,8 | 21,80 |
| | TR00-245 | 62,0 | 53,5 | 69,95 |
| | TR00-260 | 100,0 | 78,0 | 239,30 |
| niro | TR00-512 | 22,0 | 17,0 | 10,25 |
| | TR20-515 | 24,0 | 20,0 | 23,80 |
| | TR00-522 | 36,0 | 30,5 | 39,90 |
| | TR00-530 | 45,0 | 36,8 | 49,90 |
| | TR00-545 | 62,0 | 53,5 | 152,35 |

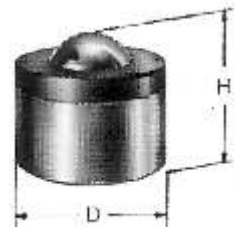


Sonder-Topfrollen

| TR02 | Bestellzeichen | Abmessungen | | Preis Euro |
|-------------|-----------------------|-------------|-------|------------|
| | | D | H | |
| metallblank | TR02-076 | 130,0 | 103,0 | 562,40 |
| | TR02-090 | 145,0 | 115,0 | 715,80 |
| verzinkt | TR02-108 | 18,0 | 12,0 | 2,45 |
| | TR02-112 | 22,0 | 17,5 | 3,85 |
| | TR02-115 | 24,0 | 20,0 | 6,30 |
| | TR02-122 | 36,6 | 30,0 | 8,10 |
| | TR02-130 | 44,4 | 36,8 | 11,50 |
| | TR02-145 | 62,6 | 53,5 | 33,25 |
| | verzinkt + Niro-Kugel | TR02-212 | 22,0 | 17,5 |
| TR02-222 | | 36,5 | 30,0 | 13,55 |

| TR02-5.. | Bestellzeichen | Abmessungen | | Preis Euro |
|----------|----------------|-------------|------|------------|
| | | D | H | |
| niro | TR02-508 | 18,0 | 12,0 | 11,50 |
| | TR02-512 | 22,0 | 17,5 | 10,25 |
| | TR02-515 | 24,0 | 20,0 | 23,80 |

| TR12 | Bestellzeichen | Abmessungen | | Preis Euro |
|--------------------------|----------------|-------------|------|------------|
| | | D | H | |
| verzinkt + POM-Laufkugel | TR12-108 | 18,0 | 12,0 | 3,75 |
| | TR12-112 | 22,0 | 17,5 | 5,90 |
| | TR12-115 | 24,0 | 20,0 | 6,55 |
| | TR12-122 | 36,5 | 30,0 | 12,85 |
| | TR12-130 | 44,4 | 36,8 | 31,40 |



Preise pro Stück, ab hier, ohne Verpackung + MWSt. Rabatte je nach Abnahmemenge.
Mindestrechnungswert netto je Bestellung oder Abruf EURO 20,-.

Schwerlastkugelrollen

| SR00- SR04 | Bestellzeichen | Abmessungen | | Preis Euro |
|---------------------------|----------------|-------------|------|---------------|
| | | D | H | |
| Stahl chromatiert | SR10-020 | 20,0 | 20,3 | 17,15 |
| | SR00-045 | 44,0 | 41,3 | 40,70 |
| | SR00-050 | 50,0 | 44,5 | 45,75 |
| | SR00-060 | 60,0 | 61,5 | 70,80 |
| | SR00-100 | 100,0 | 98,4 | 252,30 |
| mit Gewinde- zapfen | SR04-020 | 20,0 | 20,3 | 18,40 |
| | SR04-045 | 44,0 | 41,3 | 43,85 |
| | SR04-050 | 50,0 | 44,5 | 49,20 |
| | SR04-060 | 60,0 | 61,5 | 79,50 |
| | SR04-100 | 100,0 | 98,4 | 269,30 |

| BR00- KR00 | Bestellzeichen | Abmessungen | | Preis Euro |
|---|------------------|-------------|------|---------------|
| | | D | H | |
| Stahl chromatiert Boden- flansch | BR00-024 | 24,0 | 22,6 | 25,80 |
| | BR00-045 | 44,0 | 41,3 | 60,35 |
| | BR00-050 | 50,0 | 44,5 | 67,50 |
| | BR00-060 | 60,0 | 61,5 | 96,65 |
| | BR00-110 | 111/105,0 | 98,4 | 314,45 |
| | Kopf- flansch | KR00-024 | 24,0 | 22,6 |
| KR00-045 | | 44,0 | 41,3 | 60,35 |
| KR00-050 | | 50,0 | 44,5 | 67,50 |
| KR00-060 | | 60,0 | 61,5 | 96,65 |
| KR00-110 | | 110,0 | 98,4 | 314,65 |



Gefederte Kugelrollen

| FG1. | Bestellzeichen | Abmessungen | | Preis Euro |
|---------------------------------------|----------------|-------------|-------|---------------|
| | | D | H | |
| metallblank Topfrollen mit Bung | FG10-012 | 26,0 | 38,5 | 28,80 |
| | FG10-015 | 28,0 | 42,0 | 30,40 |
| | FG10-022 | 42,0 | 62,0 | 44,80 |
| | FG10-030 | 50,0 | 75,0 | 49,50 |
| | FG10-045 | 70,0 | 109,0 | 104,70 |
| ohne Bund | FG12-012 | 26,0 | 38,5 | 24,80 |
| | FG12-015 | 28,0 | 42,0 | 26,00 |
| | FG12-022 | 42,0 | 62,0 | 38,60 |
| | FG12-030 | 50,0 | 75,0 | 39,30 |
| | FG12-045 | 70,0 | 109,0 | 83,70 |

| FR01. | Bestellzeichen | Abmessungen | | Preis Euro |
|-------------|----------------|-------------|-------|---------------|
| | | D | H | |
| metallblank | FR01-025 | 25,0 | 28,5 | 25,55 |
| | FR01-050 | 50,8 | 60,3 | 60,90 |
| | FR01-060 | 63,5 | 62,7 | 69,60 |
| | FR01-070 | 69,9 | 124,3 | 187,80 |



Spezial-Kugelrollen

| FR00- | Bestellzeichen | Abmessungen | | Preis |
|-------|----------------|-------------|-------|--------|
| | | D | H | |
| | FR00-020 | 20,0 | 32,2 | 24,55 |
| | FR00-025 | 44,0 | 61,9 | 26,05 |
| | FR00-045 | 50,0 | 81,0 | 70,55 |
| | FR00-050 | 60,0 | 156,4 | 87,95 |
| | FR00-060 | 100,0 | 171,5 | 183,05 |

| Bestellzeichen | Abmessungen | | Preis |
|----------------|-------------|-------|-------|
| | D | H | |
| TR00s230 | 45,0 | 36,8 | 17,70 |
| TR00h230 | 45,0 | 36,8 | 17,00 |
| ZK05-015 | 42,0 | 25,0 | 2,45 |
| ZL05-015 | 42,0 | 106,0 | 4,05 |

Befestigung von Kugelrollen

| ZR.. | Zackenring | Kugelrolle | Preis Euro |
|------|----------------|--------------------|---------------|
| | Bestellzeichen | Bestellzeichen | |
| | ZR22-S11 | TR...-12 | 0,25 |
| | ZR24-S11 | KU3...-15 TR...-15 | 0,30 |
| | ZR45-T05 | KU3...-30 TR...-30 | 0,75 |

| ZKF. | Krallenfederring | Kugelrolle | Preis Euro |
|------|------------------|--------------------|---------------|
| | Bestellzeichen | Bestellzeichen | |
| | ZKF-2415 | KU3...-15 TR...-15 | 0,65 |
| | ZKF-3622 | KU3...-22 TR...-22 | 0,75 |
| | ZKF-4530 | KU3...-30 TR...-30 | 1,00 |

Für alle Topfrollen TR, Schwerlastrollen KR und Kugelrollen KU3. sind Toleranzhülsen zum Festsetzen lieferbar. Bitte gesonderte Preisliste anfordern.

Kugelrollen-Tische

RT.. Kugelrollentische fertigen wir in vielen Varianten, auch nach Zeichnung. Wir bitten um Ihre Anfrage!

Preise pro Stück, ab hier, ohne Verpackung + MWSt. Rabatte je nach Abnahmemenge. Mindestrechnungswert netto je Bestellung oder Abruf EURO 20,-

Dr. Erich TRETTER GmbH + Co. · MASCHINENELEMENTE

D-73098 Rechberghausen · Am Desenbach 10 · Tel. (071 61) 953 34-0 · Fax (071 61) 5 10 96

www.tretter.de · info@tretter.de